



Southend-on-Sea Crime & Disorder Reduction Partnership



Southend-on-Sea CSP Strategic Assessment 2010/11

Produced in January 2011



Crime Data - This report is based on information obtained from The Essex Police Crime computer using the B/I Query search system, The Essex Police intelligence computer and other Essex Police computer systems. The author has no control over the accuracy of data input or delay in recording crimes and information. The aforementioned systems are 'live' systems and the data and tables are based on committed dates and therefore subject to change. Data sourced through iQuanta and Headquarters crime statistics will be based on 'report creation date', whereas data sourced by the author through the Essex Police Crime Recording System will be based on 'committed to dates'.

ASB Data - This report is based on information obtained from Storm using the Journal search system. The author has no control over the accuracy, input or delay of the data information. The aforementioned system is a 'live' system and the data, charts and tables are based on closed incidents and therefore subject to change.

Mapping - Any maps within this document are reproduced from the Ordnance Survey mapping with the permission of the Controller of Her Majesty's Stationery Office Crown Copyright. Unauthorised reproduction infringes crown copyright and may lead to prosecution or civil proceedings. License No. 100021987.

Page content

Page Number

3	Introduction
4	Night Time Economy
5	Anti-social Behaviour
6	Domestic Abuse
7	Serious Acquisitive Crime
8	Management of Offenders
9	Community Engagement
10	ABH & Assault without Injury
11	Burglary Dwelling & Criminal Damage
12	Drugs Possession & Robbery
13	Serious Violent Crime & Serious Sexual Violence
14	SIA Recommendations for 2011/12

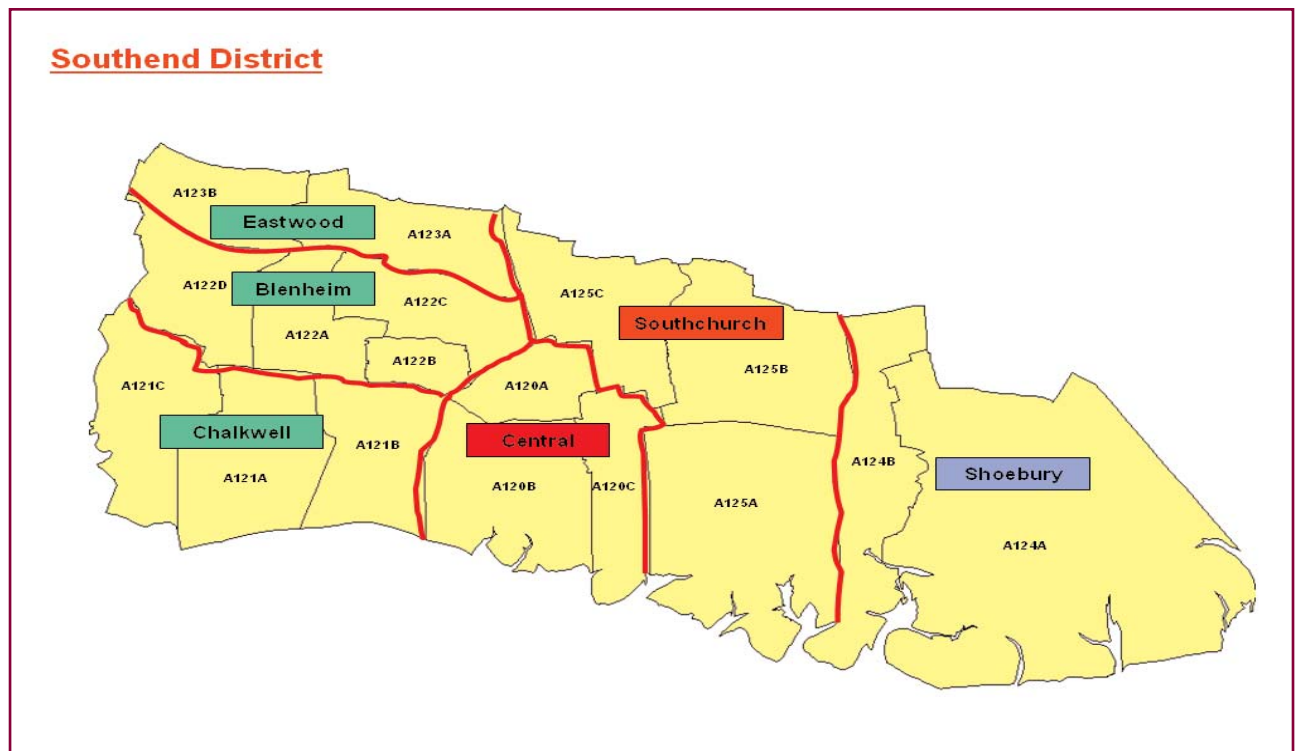
Introduction

All crime has increased by 2% when comparing April – September this year to last. There has been 6760 crimes during this period across the borough. However, last year crime had decreased by 13% compared to the previous year.

Each area is placed within its Most Similar Group (MSG), where 1 is the best performing and 15 has the worst performance. For All Crime, Southend is currently 7th within it's MSG, compared with 5th last year. Performance was worse in Quarter 1 with each month

not on target but due to better performance in August and September, the rolling 12 month figure has now turned to orange (within 5 % of target) and if the downward trend continues, Southend should finish within target at the end of the year.

There have been reductions in Serious Violent Crime, Domestic Burglary and Anti-social Behaviour, however due to the rise in vehicle crime, robbery, ABH, Common Assault and Serious Sexual Violence the overall figure for all crime has increased.

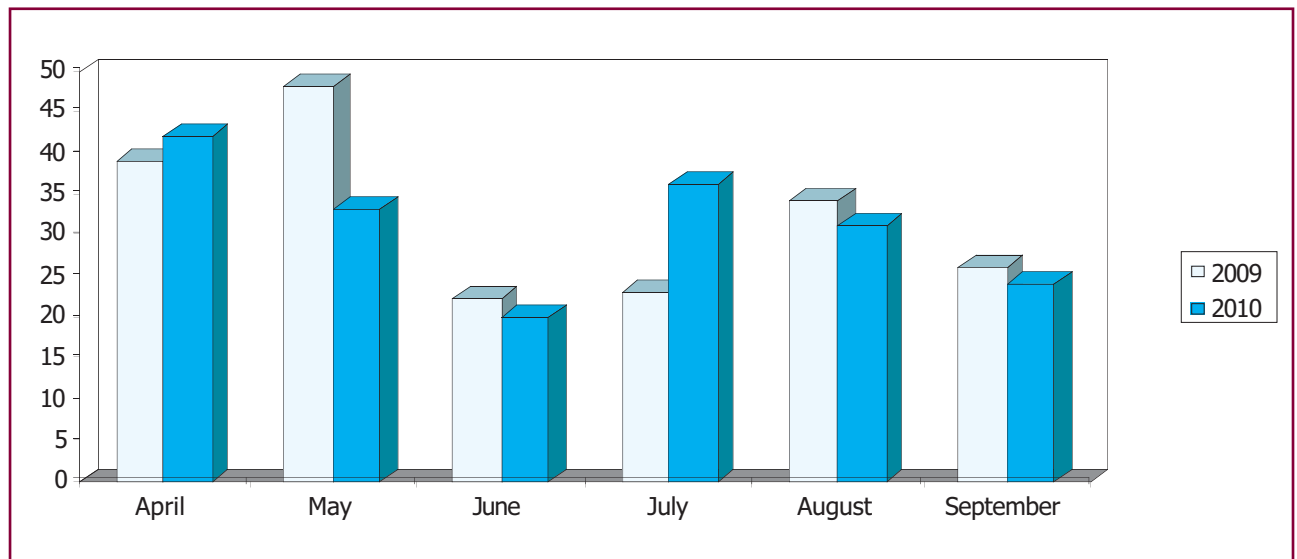


Night Time Economy

- The Night Time Economy group have been meeting for over four years and in attendance are town centre management, the SOS Bus, licensees, the Police, the Taxi Drivers' association, Southend Borough Council and more recently South East Essex College.
- The aim for the group is to reduce crime and ASB in and around the town centre during the days and times of the night time economy and this includes between the hours of 18:00—06:00.
- At the beginning of this year, a new chair person was appointed and since then an in-depth report has been produced on a monthly basis to help establish where the real issues lie and this has helped to identify an accountability zone for NTEG and is shown right.
- Overall, there has been a 6% increase in crimes occurring within the NTEG Accountability Area when comparing April – September this year to the same period last year. However, Quarter 1 of this year did see a 6% reduction to last year but this was ended by a rather warm July creating a spike in all crime types.



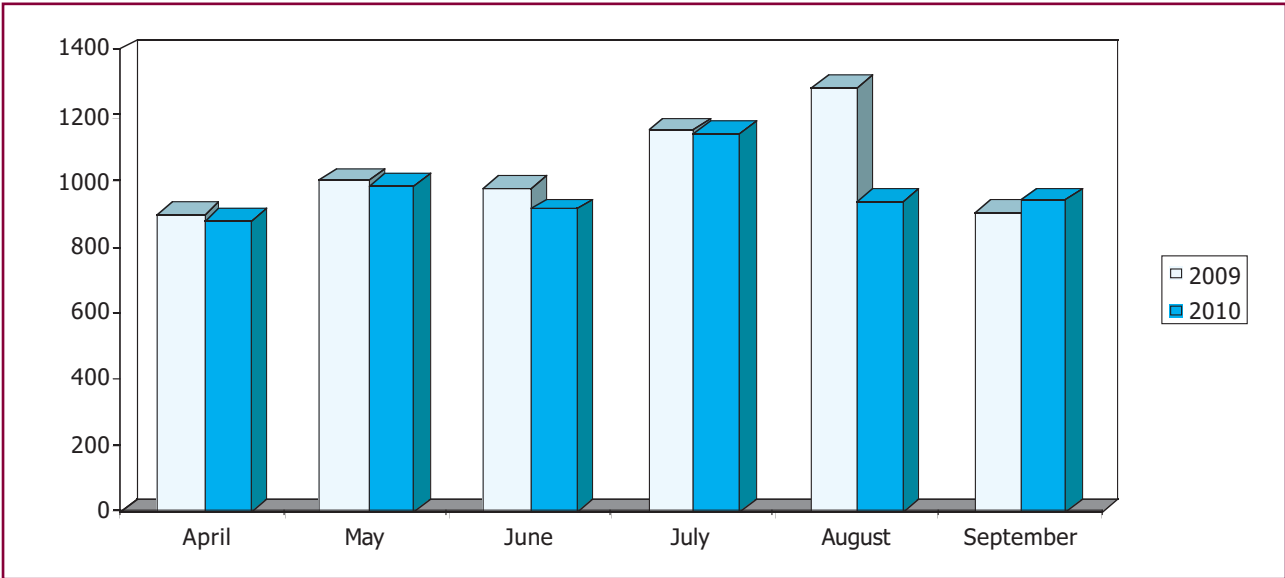
- Operation Backstreet is a multi-agency operation, which has been running on Friday and Saturday nights between 21:00 and 03:00 since July 2007. Recently, the operating times have been extended to 04:00 to meet the needs of the later licenses and has proved to be successful. Since Operation Backstreet started there has been a 52% reduction in crime within the major Night Time Economy areas.



- When looking at specific Night Time Economy related crime types (sexual offences, violence, public order and drugs) there has been an 11% decrease overall. As shown in the above graph.
- There has also been an 11% reduction in Night Time Economy related crimes occurring within licensed premises.
- This year, Southend on sea has applied for Purple Flag status, which relates to a safer Night Time Economy.

Anti-Social Behaviour

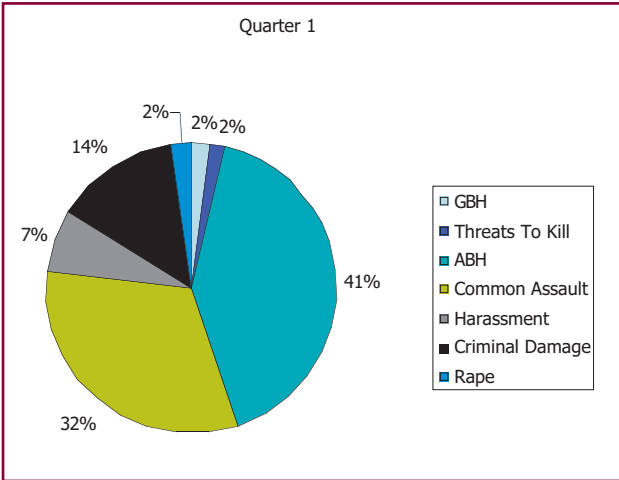
- Anti-social behaviour has decreased by 6% compared with April – September last year. As shown in the graph below.



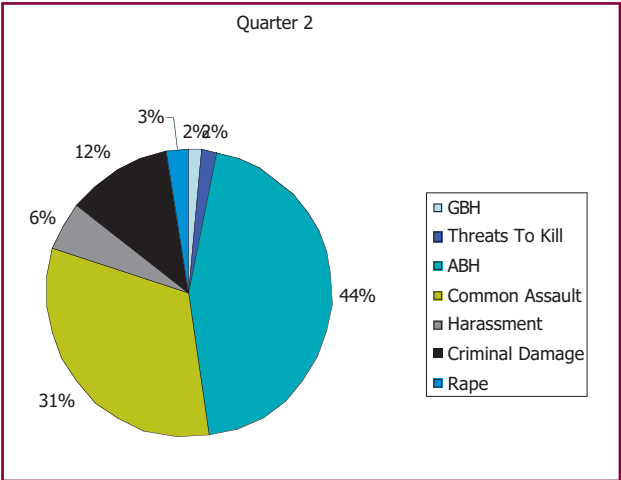
- SMAART is a multi-agency team and is made up of two caseworkers and lead by the ASB Partnership Manager. SMAART engage with the community by holding community circles and other initiatives to discuss issues within the area and these have proved very effective.
- ASBOG (Anti-social Behaviour Operations Group) was re-launched last year in order to tackle anti-social behaviour within the borough and receives attendance from Essex Police, Southend Borough Council, British Transport Police, SMAART and other various agencies. ASBOG meets once a month to discuss present and emerging issues and how to tackle them. This year, ASBOG has also set up three sub-groups of its own, the Enviro Group, the Youth Group and the Social Housing Group to tackle more specific ASB issues in and around the area. ASBOG did look into becoming responsible for tackling issues in the surrounding roads of the High Street but this is now being dealt with by NTEG, allowing ASBOG to concentrate on their 5 main priorities, prostitution related activities, the town centre tower blocks, the Four Rivers Estate, ASBOs for certain individuals and the Westborough ward.

Domestic Abuse

- The charts below show a breakdown of the offences that have been recorded by the Police as being domestic violence. These show that the highest crime



- A Perpetrator Working Group, which is chaired by probation and attended by a number of partners and agencies, has been established and is responsible for



type is ABH and Common Assault. Thankfully, domestic homicide is very rare in Southend and there have been none this year, hence why it is not represented above.

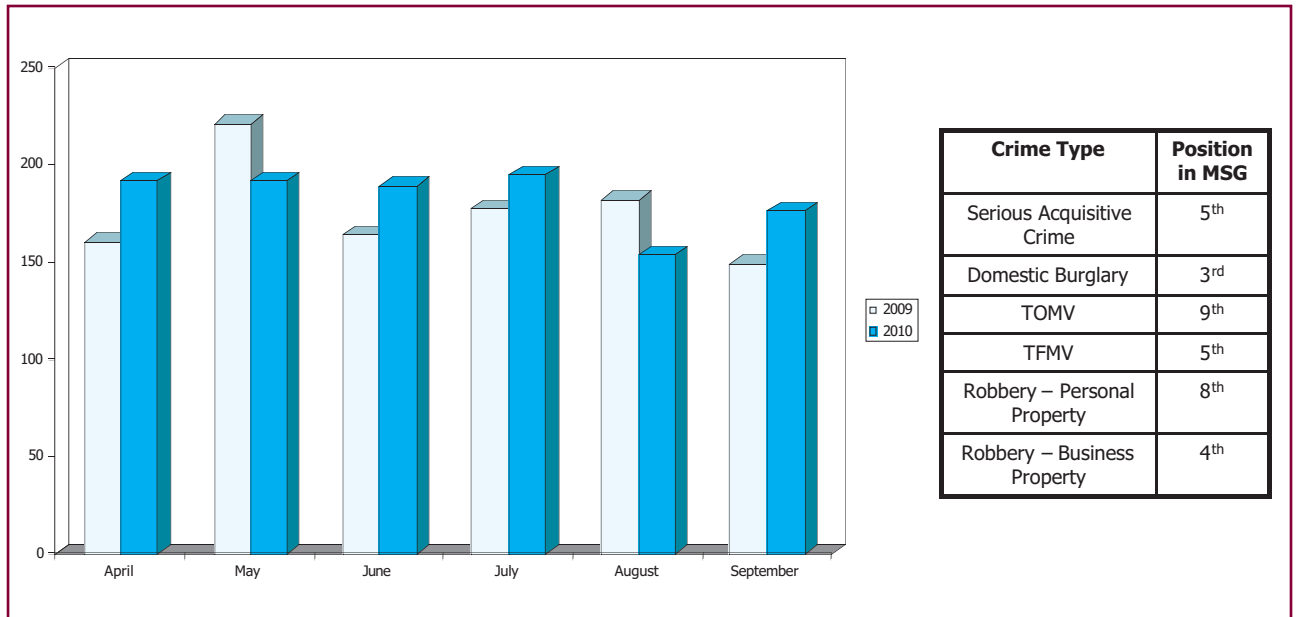
- The Domestic Abuse Forum meets regularly to discuss how to tackle these issues and increase reporting in order that victims, and perpetrators can get some help.
- Quarter 1 collectively describes April, May and June of this year and Quarter 2 is July, August and September.
- The Domestic Abuse Partnership Officer, Althea Cribb, is now on maternity leave and her replacement – Andrea Marks is now in post (as from the end of September 2010).
- The Southend Domestic Abuse Forum held its annual Domestic Abuse Awareness Week (22nd – 26th November) to raise awareness of domestic abuse issues and to showcase the support available to both victims and perpetrators across the borough. Forum members used the Essex Police trailer at the top of Southend High Street to showcase their services and communicate with members of the public. A special photo event also took place on the Tuesday to highlight the number of people who report incidents of domestic abuse to the police each week. Members also participated in interviews with local radio station, Southend Radio, who created a dedicated page on their website for the awareness week. Various articles were also published in the local press and partner agency publications to assist in raising awareness. Relevant promotional material was distributed to agencies and organisations across the borough.

the actions within the Domestic Abuse Strategy that fall under Aim Two: Perpetrators will be challenged and held accountable for their abusive behaviours and offered routes for change. The initial meeting took place on 15th November to establish the core terms of reference and ongoing objectives.

- A ‘Deep Dive’ review on improving local Domestic Abuse services is about to commence. A unique review of how well local partners work together to tackle domestic abuse is on its way. The work, known as ‘deep dive’ has been commissioned by the Borough’s Local Strategic Partnership, Southend Together, and will bring together public sector agencies and take a fresh look at how they can give the best possible help for victims and perpetrators whilst getting the most from each and every public pound. Completing in March 2010, the ‘dive’ will make clear and practical recommendations for improvement, including how local agencies can work better together to provide services at lower cost; and pinpointing areas where investment in prevention efforts could realise savings and better service further down the line. The work will focus on a ‘place based’ rather than organisation – centered standpoint. This will be used to develop a better understanding of how domestic abuse services look from the perspective of those that use them. A project team with key partners and agencies is in the process of being formed.

Serious Acquisitive Crime

- The iQuanta Serious Acquisitive Crime definition includes Domestic Burglary (including attempts), Theft of Motor Vehicle, Theft from Motor Vehicle



and Robbery of both Personal and Business Property and on comparing this year to last there has been a 4% increase. Southend is currently 5th within its most similar group for this crime type.

- Performance in Domestic Burglary is currently very good and has seen a reduction of 6%, however Theft of Motor Vehicle is up 26% and Theft from Motor Vehicle is up 3%. Robbery of Personal Property has also experienced increases and is up 6% on last year.
- This year the CDRP formed a Task & Finish group and from their budget they funded Selecta DNA kits that are to be distributed amongst the community to assist with the crime prevention work already been done around burglary. The group has now disbanded.

Management of Offenders

- The PPO Team, consists of two PPO Coordinators, two Police Officers, a link worker and a DIP worker and they support the rehabilitation of Prolific and Other Priority offenders (PPOs). A number of approaches are used, which include regular meetings and assisting with accommodation, addiction and health issues and training for a career, starting with participating in volunteering projects.
- PPOs are often substance mis-users with chaotic lifestyles, they are selected by the PPO operational group and are mainly those committing serious acquisitive crime, causing a negative impact on the community.
- At the end of September 2010 there were 30 PPOs on the Southend scheme.
- The Southend PPO cohort reduced their reoffending rate by 54% in the financial year, this is compared to the national reduction of 19% and an improvement on the 46% reduction Southend achieved the previous year.
- To assist with accommodation issues, Nelsons Gate was opened at the beginning of the summer in association with NACRO housing and Supporting People. It is a brand new complex that guarantees a minimum of 5 bed spaces for PPOs. It is staffed virtually 24 hours a day and there are rules such as: tenants have to obey a curfew, visitors have to be pre-agreed and vetted by NACRO staff, illegal substances are banned from the site and the occupants have to participate in support sessions with NACRO staff. The site is covered by CCTV and the gate and rooms can only be accessed using PAC tag entry monitored by NACRO staff.

Community Engagement

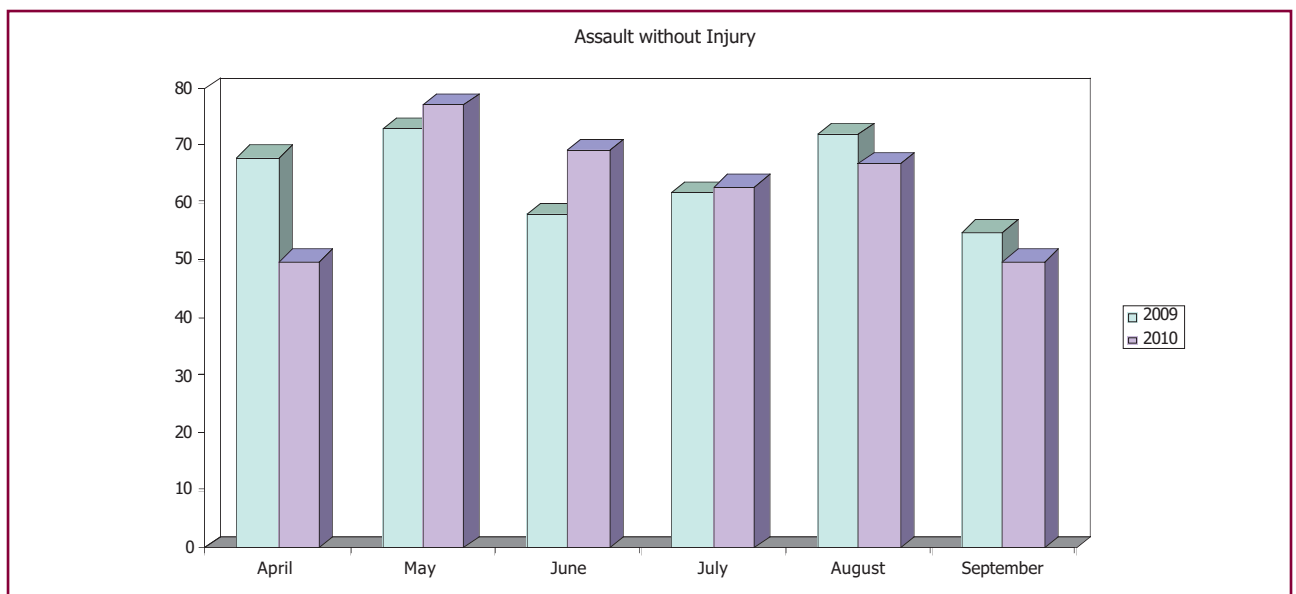
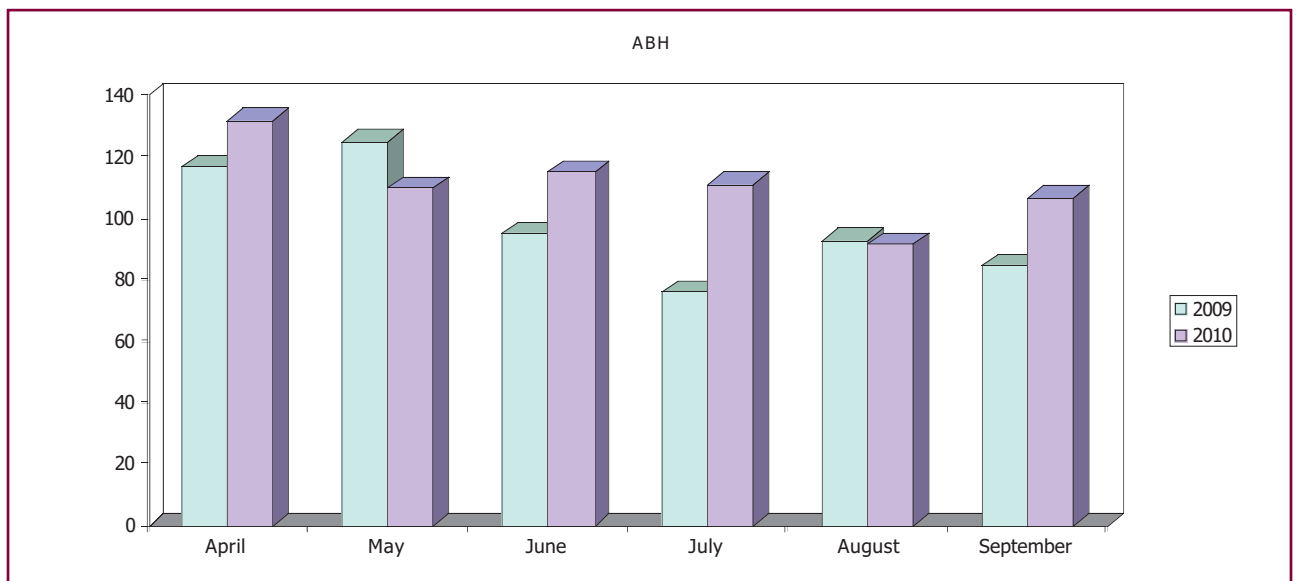
- The CSP regularly engages with the community through a variety of channels.
- NAPs (Neighbourhood Action Panels) take place approximately every six weeks in each ward and help address any issues or concerns raised and identify NAP priorities. This year, the main priority for the Kursaal ward was the prostitution related activity occurring in that area and when comparing April – September this year with the same period last year, there has been a 93% reduction.
- Neighbourhood Watch Groups are active across the borough.
- The Communicate newsletter is published on a quarterly seasonal basis and is distributed throughout the borough.
- Community Road shows take place across the borough every couple of weeks and this year, in order to aid with rehabilitation, PPOs have been assisting with these and so far the feedback from this has been very positive.
- The CSP website posts all the latest crime information and events that are taking place within the community and also allows access to very useful websites such as crime mapping where crime levels in specific areas can be monitored.

Violent Crime

ABH & Assault without Injury

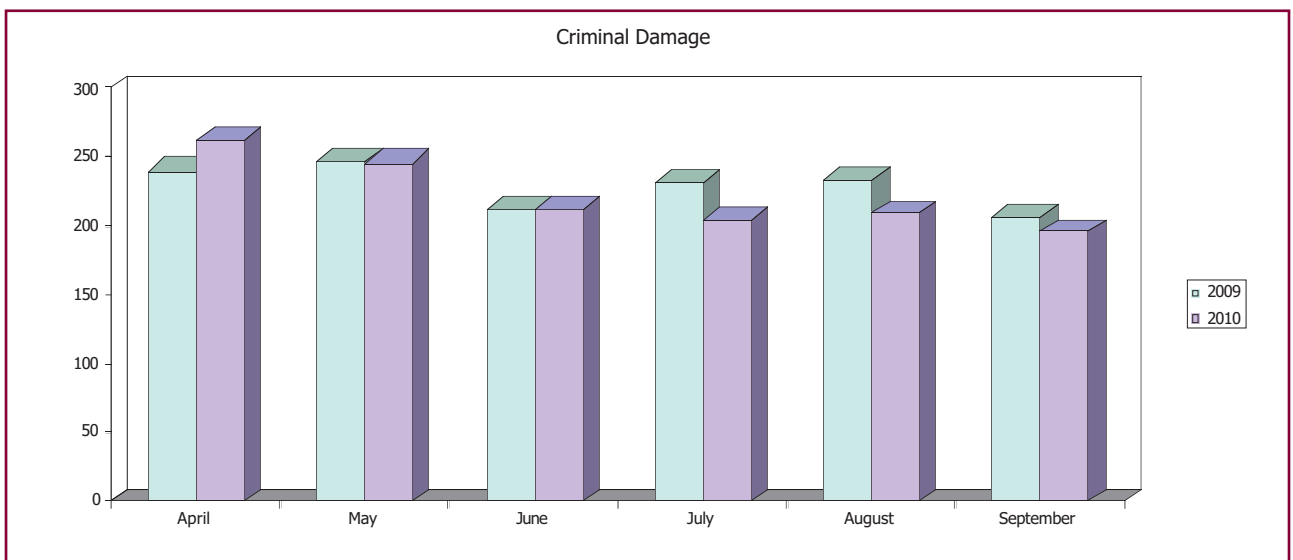
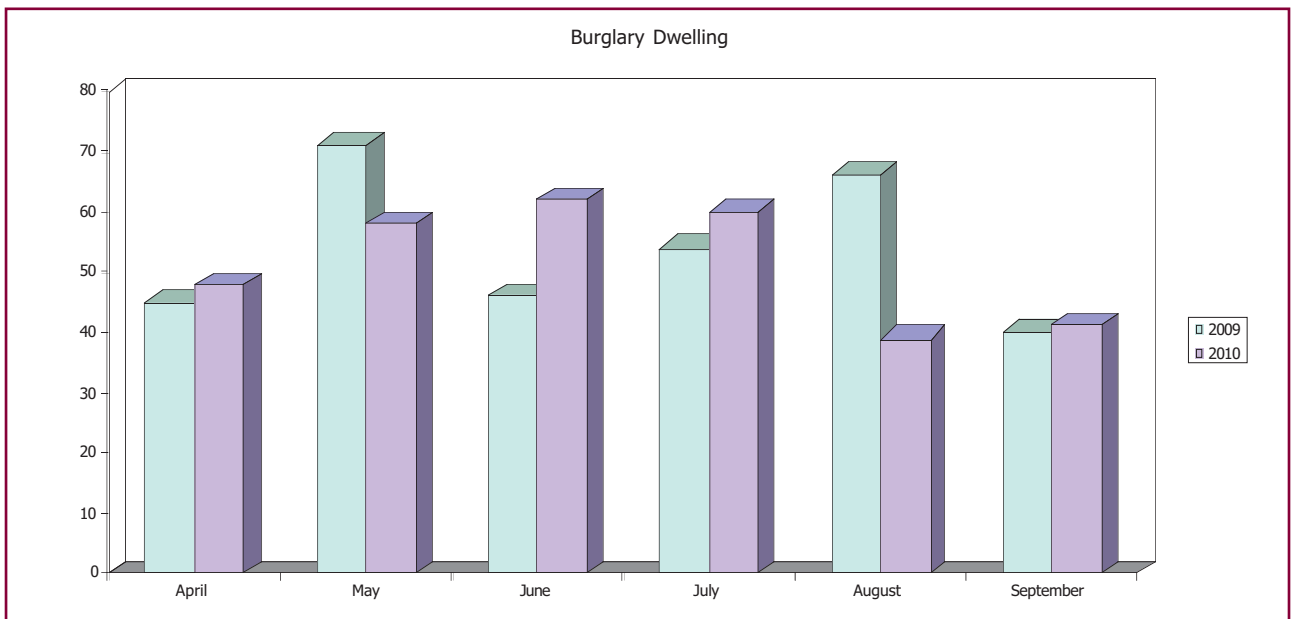
- **ABH** – 667 offences from April – September 2010.
- 12% increase on last year.
- 8th in MSG.
- 29% domestic related.
- 11% possibly related to the Night Time Economy*.
- 25% of these offences occurred within Milton ward, 16% in Victoria ward and 12% in Kursaal ward.
- **Assault without Injury** – 376 offences from April – September 2010.
- Down 3% on last year.
- 7th in MSG.
- 38% domestic related.
- 2% possibly related to the Night Time Economy*.
- 22% occurred within Milton ward, 13% in Kursaal ward and 12% in Victoria ward.

*occurred within the Milton or Leigh wards within the operating days and times of the NTE.



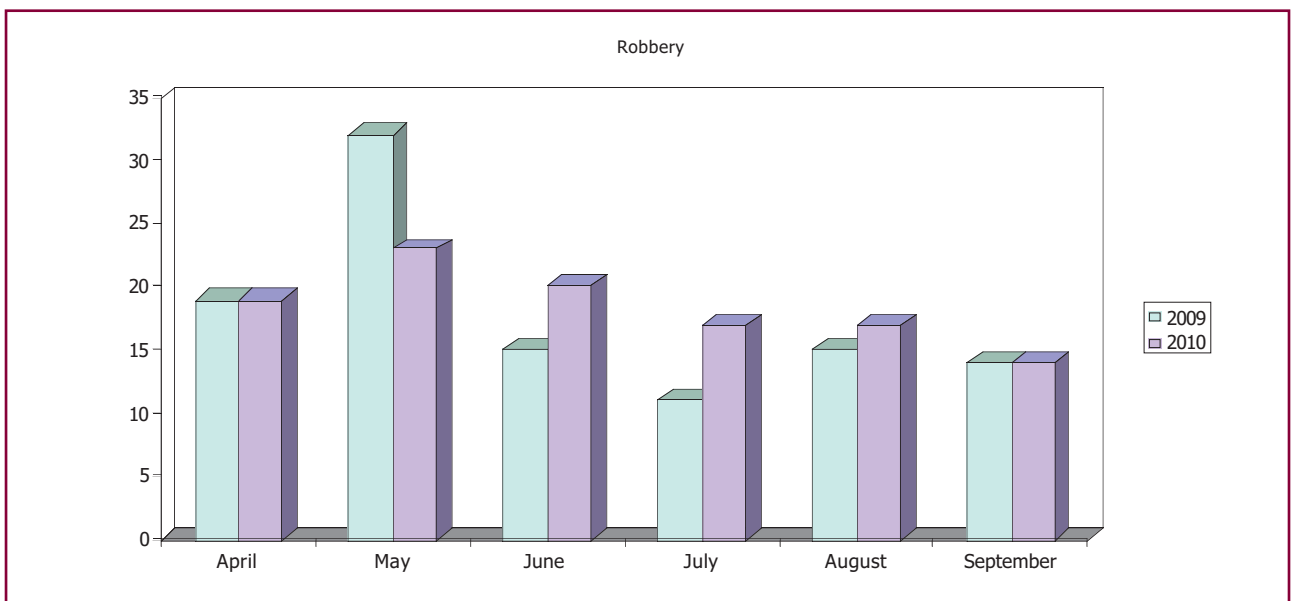
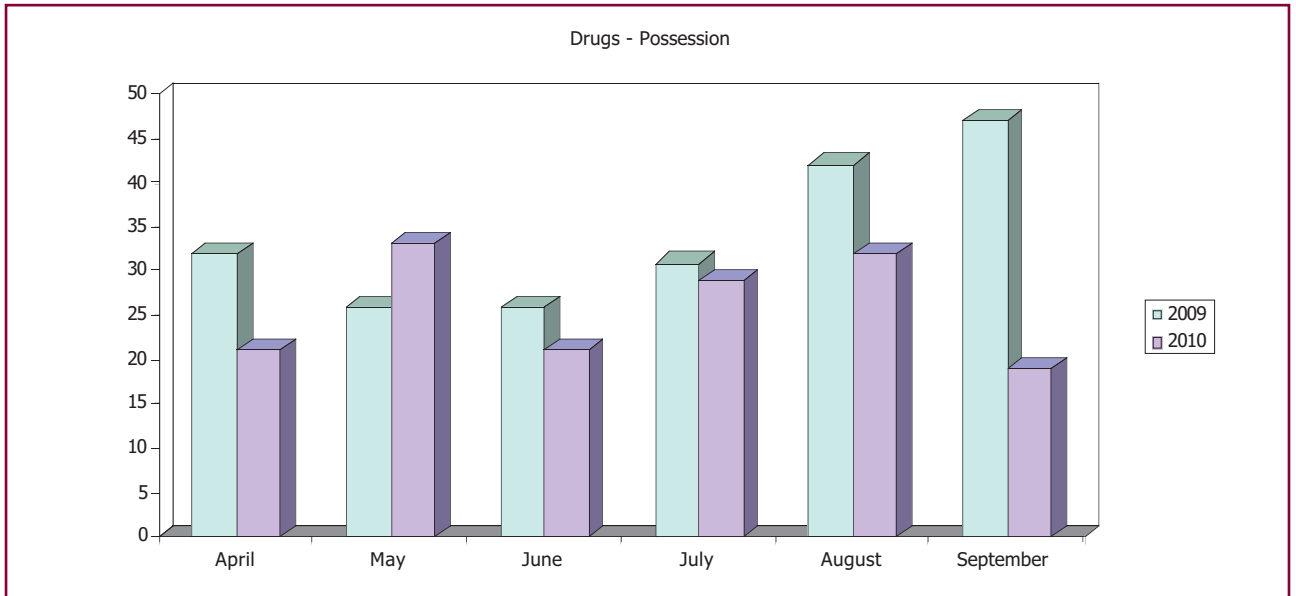
Burglary Dwelling & Criminal Damage

- **Burglary – Dwelling** – 308 offences from April – September 2010.
- Down 4% on the same period last year.
- 3rd in MSG.
- 13% occurred within the Milton ward, 12% in the Kursaal ward and 8% in Victoria ward.
- **Criminal Damage** – 1333 offences from April – September 2010.
- Down 2% on the same period last year.
- 9th in MSG.
- 13% of these offences occurred within the Milton ward, 10% in the Kursaal ward and 9% in Victoria ward.
- 47% of criminal damages were to vehicles, 20% were to dwellings and 16% equally to Buildings other than dwellings and to other than buildings or vehicles.



Drugs – Possession & Robbery

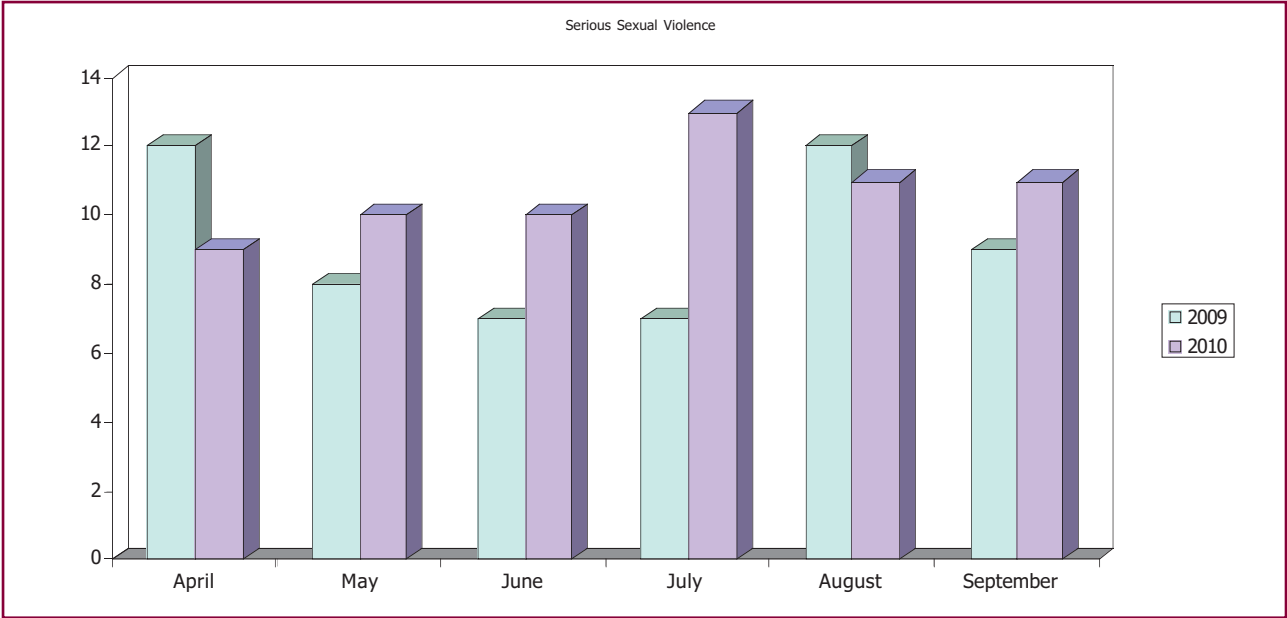
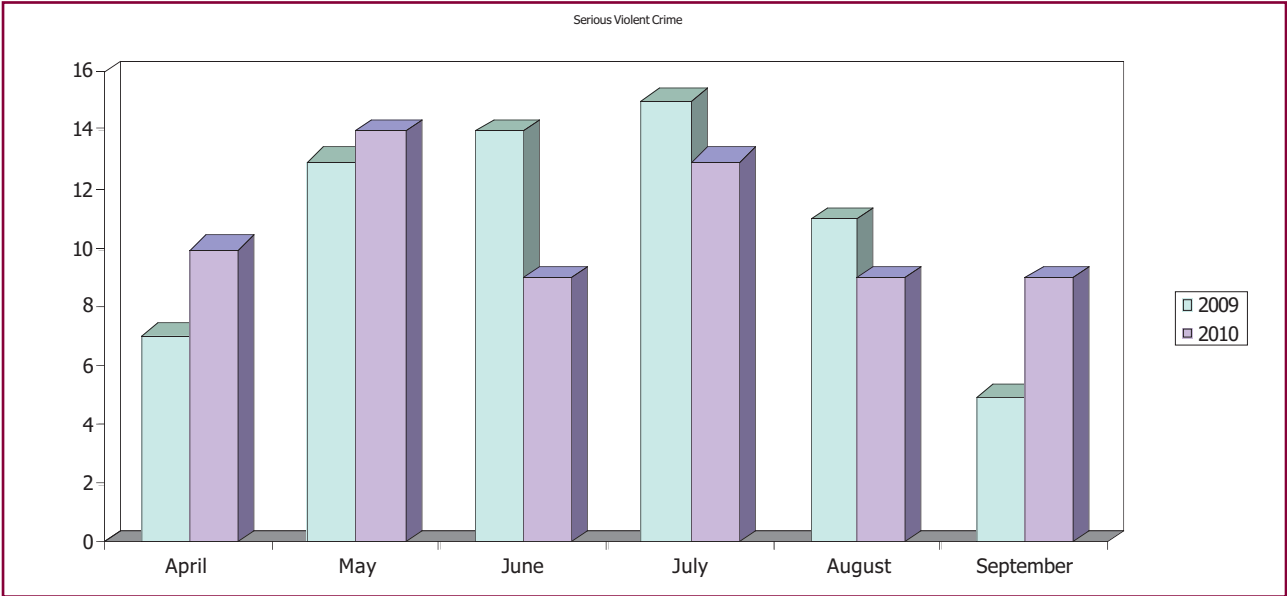
- **Drugs – Possession** – 155 offences from April – September 2010.
- Down 24% on the same period last year.
- 29% occurred within the Milton ward, 21% in the Kursaal ward and 20% in Victoria ward.
- **Robbery** – 110 offences from April – September 2010.
- 3% increase on last year.
- 8th in MSG.
- 17% occurred within the Milton ward and equally 12% in Victoria and Kursaal wards.



Serious Violent Crime & Serious Sexual Violence

- **Serious Violent Crime** – 64 offences from April – September 2010.
- Down 1% on last year.
- 7th in MSG.
- 32% occurred within the Milton ward and 14% equally in the Kursaal and Victoria wards.

- **Serious Sexual Violence** – 64 offences from April – September 2010.
- 16% increase on last year.
- 14th in MSG.
- 17% occurred within the Milton ward, 14% in the Kursaal ward and 12% in Victoria ward.



SIA Recommendations for 2011/2012

- A decision was taken by Southend CSP Executive this year to conduct a very light touch Strategic Intelligence Assessment. This was in view of the fact that both the future of CSP's and funding available, was unclear, and it seemed sensible not to conduct a major data exercise when there may be little resources left to deal with the outcomes from it.
- Therefore, the 2010/2011 SIA has focused on performance against our 2010 / 2011 priorities. Furthermore, following a meeting of Southend Safer Board held in December 2010, it was agreed to concentrate any remaining resources in 2011 on 5 key themes. These are areas which have been identified as community safety constants, can affect performance, and identified every year as priorities to address.
These are:
 1. Night Time Economy related crime
 2. Domestic Abuse
 3. Anti Social Behaviour
 4. Offender Management
 5. Community Engagement
- Southend CSP Executive also proposes that other crime types such as Acquisitive crime (robbery / burglary etc) and Hate crime will be addressed through task and finish groups as and when they are seen to spike in terms of report increases, or a hotspot is identified.
- This will lessen the action groups beneath the CSP, and target resources against what we know are our recurring crime concerns.

- Finally, in order for Southend CSP to maximise on its priority status as a key partnership group under the new Southend Together restructure, and bid for any monies made available from Southend Together Executive. The following recommendations proposed by Southend CSP Executive were agreed by Southend Safer Board in December 2010:

1. The crime 'constants' highlighted in this year's SIA be agreed as CSP crime priorities for 2011/2012
2. The existing CSP Action Groups for these areas (NTE Group, ASB Group, Domestic Abuse Group and Prolific and Priority Offender Group) sit beneath the soon to be formed Community Safety Group under the new Southend Together structure.
3. Southend's Community Safety Unit continues to lead on community engagement and communication work on behalf of Southend CSP.
4. Southend CSP Executive liaises closely with Southend Together Executive regarding terms of reference for the new Community Safety group.
5. Southend CSP remains open to discussions with neighbouring authorities in relation to collaborative work on crime and disorder.

*Please note that all of the above are not numbered to reflect priority.



Southend-on-Sea Crime & Disorder Reduction Partnership



Report compiled by

Southend CDRP Strategic Assessment Project Group - January 2011.

Contact: Simon Ford, Community Safety Manager,

Southend Police Station, Victoria Avenue, Southend-on-Sea, Essex SS2 6ES.

Tel: **0300 333 4444** Ext: **470411**

Email: simonford@southend.gov.uk Website: www.southendcdrp.co.uk

